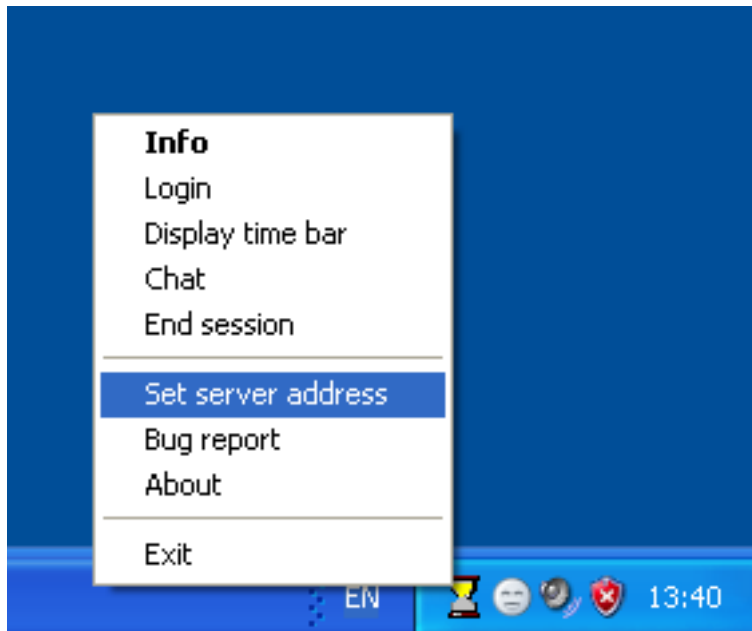


Troubleshooting: How to check what address and port CafeAgent tries to connect to?

If CafeAgent cannot connect to CafeStation, you should verify if it connects to the correct server hostname/IP and port. To do that use Set server address context menu item. Below's the visual guide.

Right click CafeAgent hourglass icon and select Set server address:

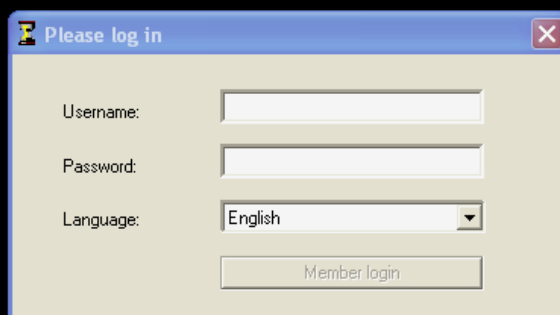


Or if the PC is locked, click anywhere on locked screen:

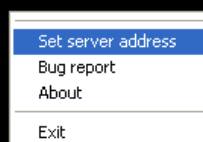
Troubleshooting: How to check what address and port CafeAgent tries to connect to?

Welcome to our Internet Cafe!

PC-66

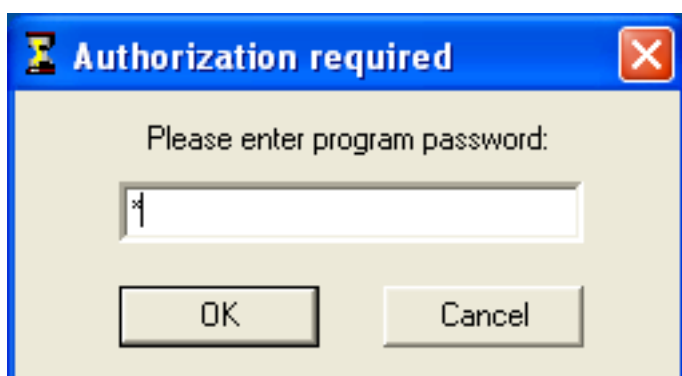


A dialog box titled "Please log in" with a close button (X) in the top right corner. It contains three input fields: "Username:" with an empty text box, "Password:" with an empty text box, and "Language:" with a dropdown menu showing "English". Below these fields is a button labeled "Member login".



A small menu box with a white background and a blue border. It contains four menu items: "Set server address" (highlighted in blue), "Bug report", "About", and "Exit".

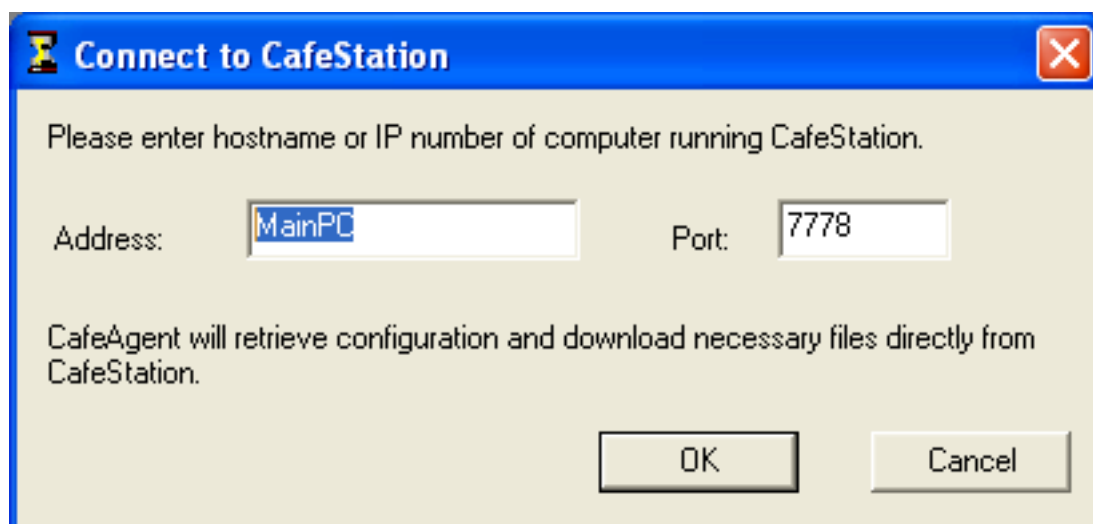
You will need to confirm client password unless you're logged into maintenance mode:



A dialog box titled "Authorization required" with a close button (X) in the top right corner. It contains the text "Please enter program password:" above a password input field with a key icon on the left. Below the input field are two buttons: "OK" and "Cancel".

Check server address and port - the default server port is 7778:

Troubleshooting: How to check what address and port CafeAgent tries to connect to?



Unique solution ID: #1182

Author: Przemek Miszczuk

Last update: 2010-03-03 17:04